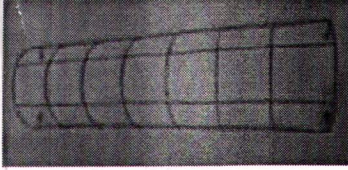




For customer service and product questions pls call 800-733-4129 from 9 am – 5 pm
Eastern Time Monday through Friday. Or Email -Kinsco@kinsmangarden.com

Downspout Cover Trellis - Assembly Instructions



Downspout
Cover Trellis X 4



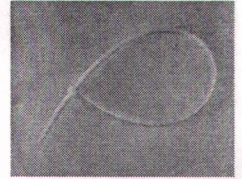
Screws X 4



Masonry
Anchors X 4

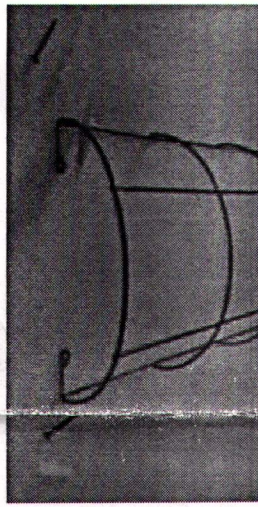
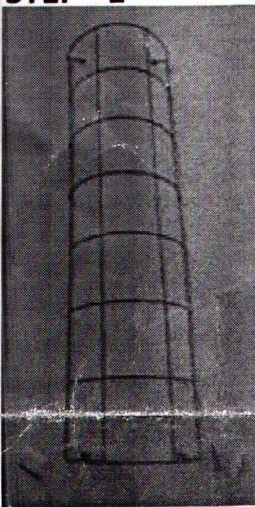


Short 6"
Cable Ties x 6



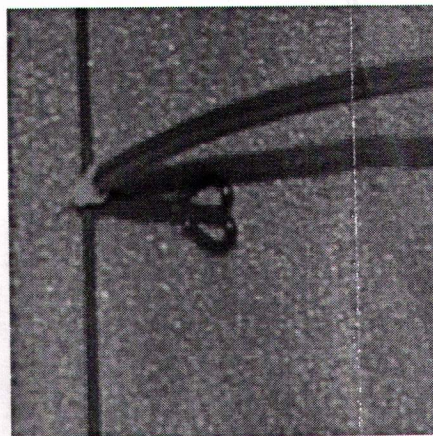
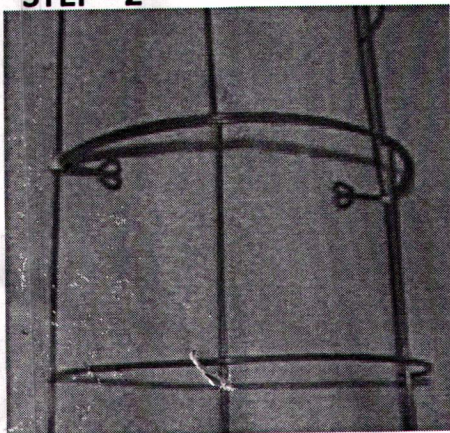
Long 13"
Cable Tie x3

STEP - 1



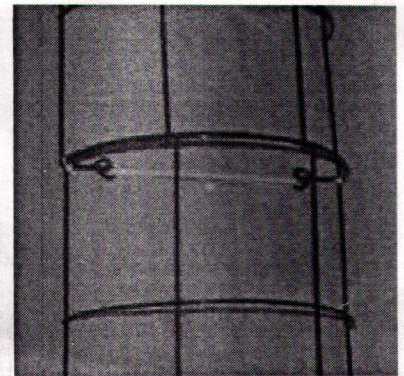
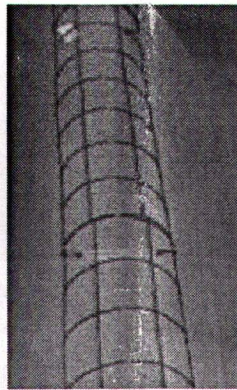
STEP – 1 : Unpack carton. Check all items with the listing charts on component list. Fasten lowest section onto wall, around downspout using 2 screws and anchors if fastening to Masonry . Fasten either Top loops to wall or lower loops, whichever is more convenient.

STEP - 2



STEP -2 : Place Second Trellis section exactly above lower section. Use a short cable Tie to fasten upper section to lower section, on one side as shown. Repeat on the other side. When cable ties are tight, trim them with scissors or a knife.

STEP - 3



STEP – 3 : Thread one long 13" cable tie through rear loop on one side then behind downspout and through the loop on the other side. Then back across and through other end of cable tie. Tighten & trim off the other end. Repeat steps 2 & 3 for 3rd & 4th Trellis sections.